



LandAid

ROUTES OUT OF HOMELESSNESS

**LANDAID'S
GRANTS
PROGRAMME**

CONTENTS

- [2](#) - BACKGROUND & OVERVIEW
- [4](#) - OUR VALUES
- [5](#) - ELIGIBILITY CRITERIA
- [6](#) - FREE PROFESSIONAL SUPPORT FOR YOUR PROJECT
- [6](#) - REPORTING REQUIREMENTS
- [7](#) - OUR **SAFE PLACES** PROGRAMME
- [8](#) - OUR **CAPITAL GRANTS** PROGRAMME
- [9](#) - OUR **MOVE-ON GRANTS** PROGRAMME
- [10](#) - APPLICATION PROCESS

BACKGROUND

Who we are

Our vision is an end to youth homelessness in the UK.

We bring the property industry together to support charities delivering life-changing services for young people who are or have been homeless, or who are at risk of homelessness in the future.

What we do

When we say we want to end youth homelessness, this is what we mean:

Building on work done by organisations such as Centre for Homelessness Impact, our definition of an end to youth homelessness is that it is *ended if it is prevented or is otherwise rare, brief and non-recurring*. We define young people as aged between 16-25.

Homelessness is about a lot more than rough sleeping. It is unknown how many young people experience homelessness each year in the UK, but over 120,000 young people approached their local council identifying as homeless in 2020/21.

It may not be possible to bring this number down to zero, but when young people find themselves with nowhere to live, this experience should be short and only happen once.

There should be a safe, supportive place to live for every young person facing homelessness. Each of these young people should have the support they need to find and maintain a permanent home.

Working with a unique network of corporate partners, we invest funding and expertise through a range of grant programmes where we can achieve lasting impact. We take a strategic approach to grant-making, working across three stages of the Positive Pathway (outlined below) to meet our target of creating 1,000 additional bedspaces in the youth homelessness sector between 2021-2024.

ROUTES OUT OF HOMELESSNESS OVERVIEW

Thanks to the funds raised by our supporters in the property industry, we are able to make grants totalling over £2,000,000 per year to charities and not-for-profits who provide support and accommodation to young people experiencing homelessness. We aim to deliver a range of programmes which

- Deliver the greatest positive impact on the lives of young people facing homelessness.
- Identify emerging needs, together with the most effective solutions and the organisations best placed to implement them.

- Are based on and showcasing best practice, or offer clear opportunities for learning from new approaches.
- Leverage the resources and skills of LandAid’s staff, networks, partners, and supporters to maximise the quality and scale of support for young people.
- Meet the national and regional strategic priorities of LandAid and our partners.

Each of our grant programmes, outlined below, are designed to create additional bedspaces of different types:

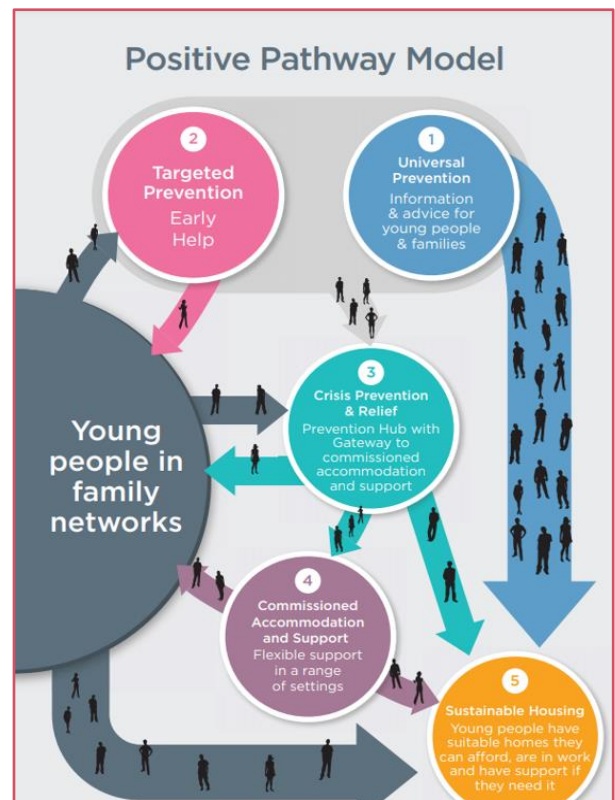
Safe Places programme – short and medium-term hosting bedspaces for young people. This could include Nightstop or Supported Lodging type projects, amongst others.

Capital Grants programme – a grants programme funding bedspaces which are owned or leased by not-for-profit organisations, including new builds, renovation and other innovative capital projects.

Move-on Grants programme – funding access to private rented sector bedspaces for young people ready to move into independent accommodation.

These programmes support interventions on 3 points of the [Youth Homelessness Positive Pathway Model](#). This framework, developed by St Basils, alongside statutory and third-sector partners, is applicable nationwide. It provides a strategic overview of the breadth of provision needed to 1) prevent young people from becoming homeless and 2) to help young people who do become homeless to build a more positive future. Whilst we recognise the importance of preventative measures, our focus is on the three stages of bed-space provision. This allows us to draw upon the expertise of our supporters in the property industry. Our programmes therefore create **Emergency**, **Supported** and **Move-On** bedspaces.

Grant applications are processed by our Programmes and Impact team and presented for consideration to LandAid’s Grant and Impact Committee, comprising senior figures from our industry supporters with significant expertise in investment, housing and social impact.



OUR VALUES

[Our values](#) guide our approach to grant-making and the impact we aim to achieve:



We're **Ambitious**

- We want to create 1,000 bedspaces between 2021-24 for young people who have experienced homelessness.
- We aim to provide added value to our grants by brokering new relationships and opportunities for our charity partners as well as in-kind support from our corporate partners.
- We support charities who are striving to deliver in line with best-practices such as taking a trauma-informed approach to the work, or have developed psychologically-informed environments for young people



We're **Responsible**

- We broker free professional support from our members in the property industry. This can be linked to this specific grant-funded project, or other organisational priorities and aspirations
- We like to develop a two-way working relationship with our charity partners. If you're not sure about something, get in touch
- We want to understand the impact our grants have, without overburdening charities with onerous reporting requirements
- We listen to you. Our priorities are informed by the trends identified by front-line charitable organisations and the changing needs of young people



We're **Tenacious**

- We understand projects may not always proceed as planned, and can work with you to overcome obstacles to success
- We want to deliver the greatest possible impact over the long-term.
- We want to understand and celebrate the impact of our funding and the social value we help charity partners achieve, and also understand and learn from the challenges.



We're **Inclusive**

- We want to see that you tailor your approach to support the different lived-experiences of young people you support
- We like to see ideas and proposals that give agency to, and empower young people directly
- We want to support communities of young people who are disproportionately affected by homelessness
- We want to make projects happen with our funding and support. This includes supporting organisations whose ideas and commitment to young people are greater than their organisational history



We're
Creative

- We like to test out innovative approaches. If you have an idea to create additional bed-spaces for young people which doesn't seem to match with our grant programmes, get in touch for a conversation.
- We can work with charity partners to co-design proposals to ensure the best possible outcomes

ELIGIBILITY CRITERIA

Organisational Information

- You **must** be a Charity, Community Interest Company (CIC), Charitable Incorporated Organisation (CIO) or other form of not-for-profit organisation.
- You need at least three unrelated members of your Board of Trustees.
- Your charity **must work with young people aged 16-25** who are homeless, or who are at risk of, or who have experienced homelessness. This **does not have to** be the exclusive focus of your organisation's work. However, **LandAid funding can only cover projects (or parts of projects) which specifically support this age-group**

Project Information

- Any project we fund must take place in the **UK**.
- We **do not** retrospectively fund projects, or fund projects which are the duty of statutory funders, or projects that you could fund yourselves. We do not make unrestricted grants towards running costs
- We are open to partnership applications, with an identified lead partner who will hold the funding and monitoring duties associated with the grant

Financial Information

- You must not have free reserves far in excess of your reserves policy without a valid reason. We define this to include reserves which you allocated to a certain purpose but are free to reallocate as needed. It does not include the value of fixed assets such as buildings.

Additional documentation required

- Latest copy of your annual accounts and impact report
- The following policies: Safeguarding; Equality, Diversity and Inclusion
- Memorandum & Articles of Association

FREE PROFESSIONAL SUPPORT FOR YOUR PROJECT

Our Pro Bono Programme seeks to match the knowledge and professional services of property industry professionals with not-for-profit organisations across the UK. The earlier in a project that we can discuss professional support with you, the more value we are able to add in developing the project, and the more likely a corporate partner is to offer the support.

Examples of support our network of partners have provided include (but are not limited to): architectural / engineering advice; development management; property investment / financial advice; surveying services; legal advice, and tenant representation.

This support is available to **all non-profits with an inclusive social mission**, whether you are in receipt of grant-funding or not. Please get [in contact with us](#) to find out more.

REPORTING REQUIREMENTS

We aim to strike a balance between being able to learn from, and celebrate the impact of, the projects we support, without over-burdening charity partners with reporting requirements.

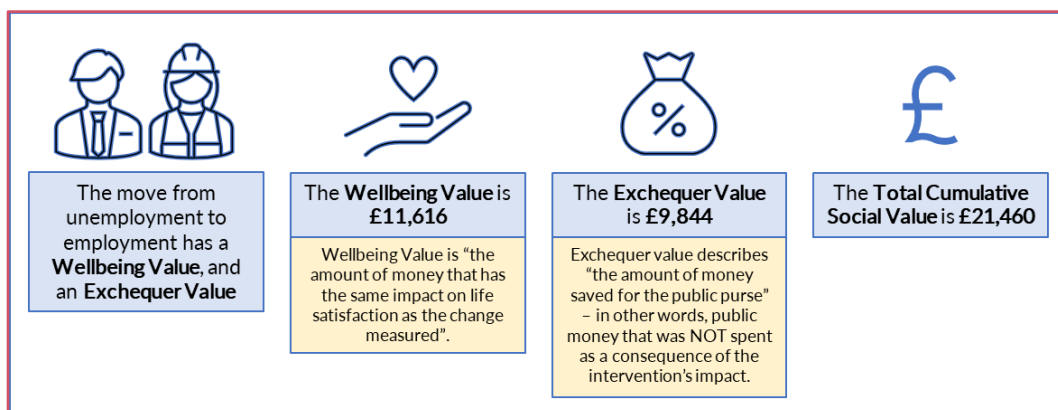
Impact

We want to capture the impact of the projects we fund over a 3-year period. Our primary KPI is the number of bedspaces our funding creates. This will be defined slightly differently for different grant programmes. Our measures of success also include outputs such as the number of young people housed and/or moved into employment. We may wish to monitor outcomes around wellbeing and social connections. As well as numerical reporting, our reporting requirements, which we are happy to discuss with you, include case stories, photos, and videos (anonymised if required) which we can share with our supporters

Social Value

Through the use of our Social Value calculator, created by [HACT](#), we assess the predicted social value of grant applications, and monitor the progress of the projects we fund to further our understanding of the value generated by different approaches.

Our calculator produces two values:



Wellbeing Value measures the positive impact which outcomes such as moving from temporary to secure accommodation may have on young people – this is ultimately what

concerns us most. However, there are other positive impacts, such as the savings to the public. This saving is referred to as **Exchequer Value**.

These figures, combined, give us the **Total Cumulative Social Value** of a project.

ROUTES OUT OF HOMELESSNESS PROGRAMME DETAILS

OUR SAFE PLACES PROGRAMME

Through our Safe Places Programme we aim to create up to **250** host-household bedspaces for young people by 2024. To deliver this impact we will work in partnership with the national Nightstop network, as well as other local and regional charities in specific areas of the country, or who are working with specific communities of people where the need, and the potential to achieve most impact is clearly evidenced.

What can we fund?

We want you to tell us! Funding can be used in a variety of ways by charities, including

- Host recruitment campaigns for Nightstops, Supported Lodgings or other hosting initiatives
- Other interventions to assist volunteer host schemes to grow their capacity, including launching new services

What are the desired outcomes?

This list is not exhaustive. You may wish to take a flexible approach within your project plan, and fund a number of different methods. We're keen to hear your ideas for how you can best achieve the following outcomes for young people.

- Creation of safe, good quality, host-household bed-spaces for young people
- Young people are able to move on to secure accommodation after a time-limited stay in the accommodation
- Young people experience feel safer, better connected and more hopeful about their future

How much funding is available?

We do not have set limits on funding applications, but within applications we look at a **bedspace** usually costing anywhere between **£1,000 - £3,500** for this funding programme. We welcome applications from charities who have identified a clear need and solution. We want you to clearly demonstrate how you will achieve lasting impact for young people through this increased emergency capacity.

What is a bedspace in this grant programme?

- A safe, good quality accommodation option which will be available on average for at least three-years
- If our grant is match-funding within a larger project, we only count LandAid's bedspaces as the proportion of bedspaces created within the project by our funding

- Bedspaces are time-limited, over a short or longer-term period, with evidenced pathways for young people to access more permanent housing

How will we calculate predicted social value?

- Predicted social value will be calculated as a one-off benefit for the expected number of young people over a 3-year period to be hosted by the project and successfully move-on to more permanent housing.
- We will base these estimates on the information provided in your application, and on evaluations of similar schemes where possible.

OUR CAPITAL GRANTS PROGRAMME

Through our Capital Grants Programme, we aim to create up to **300** bedspaces in accommodation which will be owned or leased by non-profit organisations specialising in support for young people. We will seek assurances from you that the bedspace will be used for this purpose for a minimum of 8 years.

What can we fund?

We want you to tell us! Funding can be used in a variety of ways by charities, including

- New-build projects
- Modular and other MMC (Modern methods of construction)
- Renovations to reconfigure, or extend existing housing-stock or conversions of non-residential buildings
- Renovation projects to bring out-dated accommodation up to high standards
- Other creative solutions for emergency accommodation such as these pods created for [Shelter from the Storm](#)

We may also ask you for information on the sustainability of the project and have a preference to fund projects which deliver low-carbon housing where possible.

What are the desired outcomes?

This list is not exhaustive. You may wish to take a flexible approach within your project plan, and fund a number of different methods. We look at value for money, but equally do not want you to compromise on quality. We're keen to hear your ideas for how you can best achieve the following outcomes for young people.

- Create safe, good quality bedspaces for young people along the Positive Pathway Framework
- Young people are able to sustain their tenancies, and build on their existing life-skills
- Young people are able to access or maintain employment, training and/or education
- Young people experience feel safer, better connected and more hopeful about their future

How much funding is available?

Our capital funding usually varies between £20,000 and £100,000, however we do not have hard and fast limits on funding applications. We welcome applications from charities who have identified a clear need and solution. We want you to clearly demonstrate how you will achieve lasting impact for young people through this increased capacity.

What is a Capital bedspace?

- A safe, good quality accommodation option for 16-25 year olds which will be available to be used for these purposes by the organisation for 8-years or more
- LandAid funding is key in adding this extra capacity
- Bedspaces have appropriate levels of staff support and clear referral routes in, and pathways out for young people.

How will we calculate social value?

- Predicted social value will be calculated across the anticipated life span of the accommodation, up to a maximum of 25 years. We will use projections for the number of young people who will achieve a successful stay and move-on to more permanent housing. Capital build costs will be amortised over the likely lifespan of the bedspace.
- We will base these estimates on the information provided in your application, and on evaluations of similar schemes where possible.
- Grant recipients will be asked to provide light-touch reporting for 3-5 years to enable us to assess the impact achieved for comparison and learning against our projected benchmark figures

OUR MOVE-ON GRANTS PROGRAMME

Through our Move-On programme, we aim to unlock **450** bedspaces in the private rented sector in the UK by 2024 for young people who are ready to move from emergency or supported accommodation into independent living.

To deliver this impact, we will work in partnership with national youth housing networks, enabling us to deliver bedspaces around the UK based on needs identified by those who are best placed to do so. We will also work strategically to identify and fund charities working in specific areas of the country or with specific communities of people where the potential to achieve most impact is clearly evidenced. If you feel your work falls under one of these categories, you are invited to apply to the scheme.

What can we fund?

We want you to tell us! Funding can be used in a variety of ways by charities, including

- Rent Deposit Schemes
- Temporary Rent Subsidy schemes for young people who have recently moved into employment and risk getting caught in the benefits trap prior to moving on into independent living
- Move-in grants for young people, or a give direct model where young people identify how best to spend the grant to ensure they achieve a sustainable move-on

What are the desired outcomes?

This list is not exhaustive. You may wish to take a flexible approach within your project plan, and fund a number of different methods. We're keen to hear your ideas for how you can best achieve the following outcomes for young people.

- Create sustainable, good quality move-ons for young people. These tenancies should last a minimum of 12 months, provide a good standard of housing and unlikely to have happened without LandAid's support

- Young people are able to access and/or sustain employment and education opportunities as part of their move-on
- Young people experience improved wellbeing and improved social connections and relationships

How much funding is available?

We anticipate the average move-on bedspace in the private rented sector will generally cost between £1,000 - £2,000 to unlock. We welcome applications from charities who have identified a clear need and solution. We will consider applications for more than this cost-per-outcome if you can clearly demonstrate how you will achieve lasting impact for young people through sustained tenancies.

If you can, for example, create 30 move-on bedspaces for young people at an average cost of £1,600 then you can apply for £48,000 in funding from LandAid. As outlined above in the 'What can we fund' section, these grants are revenue funding, to be used in whichever way you identify to be most likely to achieve results.

This is not a capital funding scheme. If you have a capital project you would like us to consider, please apply to our Capital Grants Programme

What is a Move-On bedspace?

We define a Move-On bedspace as:

- A successful sustainable move-on for a young person into the rental sector
- This move-on could not have happened without funding from LandAid
- The tenancy is expected to last a minimum of 12 months

How will we calculate predicted social value?

- Predicted social value will be calculated as a one-off benefit for each young person who is expected to achieve a successful move-on into the private rental sector.
- We will base these estimates on the information provided in your application, and on evaluations of similar schemes where possible.

APPLICATION PROCESSES

The application process is in two stages: Expression of Interest and full application form. The EOI form is available online and linked via the Grants section of our website. A pdf of the questions is available for your information on our website, but applications are only valid when submitted via the online form.

We aim to reply to EOIs within 21 days, please factor this time in when looking at the deadlines for full applications to be submitted. If we would like to progress your application to stage 2, we will send out a full application form.

Dates

Full Application deadline	Grant Committee	Applicants informed	Payments available... *
1 February 2023	20 February 2023	6 March 2023	20 March 2023
31 May 2023	19 June 2023	3 July 2023	17 July 2023
4 September 2023	18 September 2023	2 October 2023	16 October 2023
6 November 2023	20 November 2023	4 December 2023	18 December 2023
5 February 2024	19 February 2024	5 March 2024	19 March 2024

*Successful applicants have 12 months from award date to draw down their grant

Payment Structures

Successful applicants will be sent a grant offer letter with clear instructions on how to start the process of drawing down the grant. Grants are generally made in three stages. This can be flexed depending on the size of the grant, nature of the project, and recipient's needs.

Instalment 1 – 47.5% of grant. Project launch payment. Please refer to the Summary of Actions table for requirements at this stage.

Instalment 2 47.5% of grant. Halfway stage payment. Please refer to the Summary of Actions table for requirements at this stage.

Final retention payment 5% of grant. Once the project is complete and the final online End of Project Report is complete. Please refer to the Summary of Actions table for requirements at this stage.

Application Information

When completing the form, please pay particular reference to the specific fund criteria as well as LandAid's values, and how we apply these to our grant programmes. We are flexible and try to work with applicants to co-design projects which may not be an exact fit. If you have any questions you can get in touch with our team at grants@landaid.org

We do sporadically run other grant programmes, so please [sign up to our mailing list](#) online if you haven't done so already